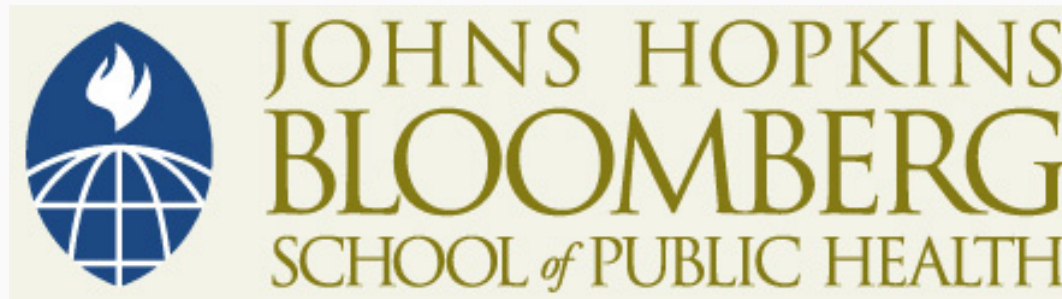


This work is licensed under a [Creative Commons Attribution-NonCommercial-ShareAlike License](https://creativecommons.org/licenses/by-nc-sa/4.0/). Your use of this material constitutes acceptance of that license and the conditions of use of materials on this site.



Copyright 2006, The Johns Hopkins University and Rashid Chotani. All rights reserved. Use of these materials permitted only in accordance with license rights granted. Materials provided "AS IS"; no representations or warranties provided. User assumes all responsibility for use, and all liability related thereto, and must independently review all materials for accuracy and efficacy. May contain materials owned by others. User is responsible for obtaining permissions for use from third parties as needed.

The Impact of Pandemic Influenza on Public Health

Rashid A. Chotani, MD, MPH

Director, Global Infectious Disease Surveillance and Alert System

Johns Hopkins University

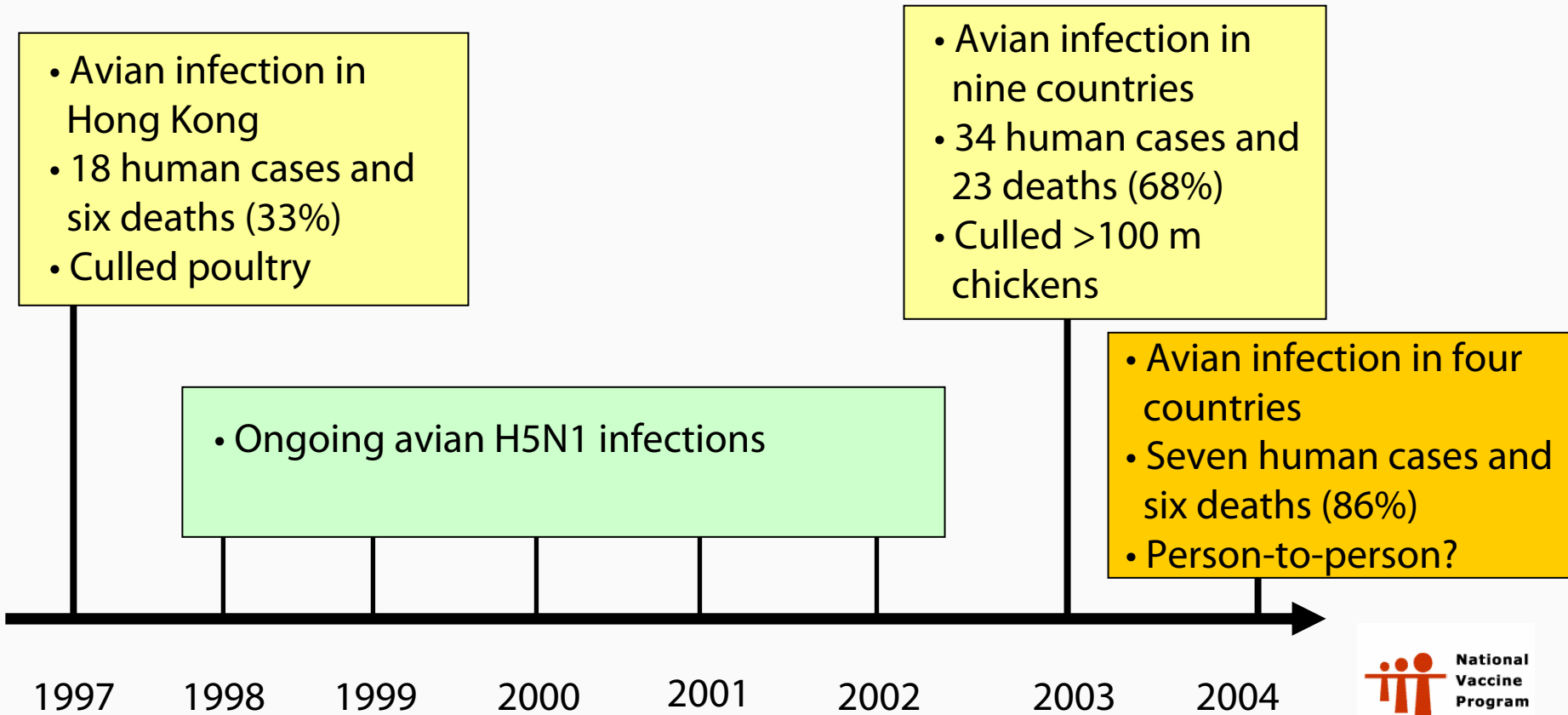
Part Four of Six

H5N1 Human Outbreaks

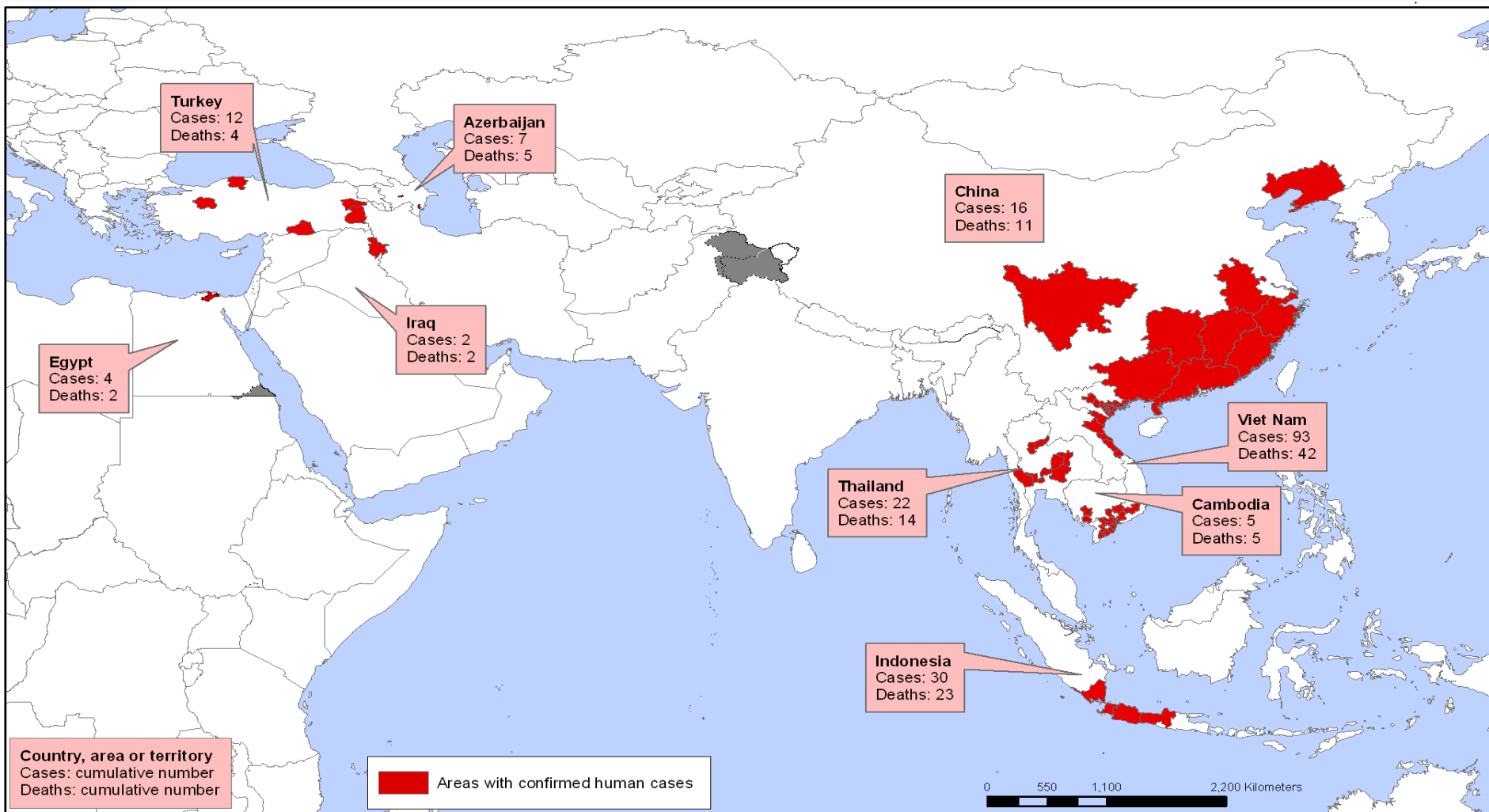
Avian Influenza A(H5N1), 1997

- Avian Influenza A(H5N1) caused 18 cases of influenza with six deaths in the Hong Kong area
- Experts are concerned that the virus may acquire a mutation encouraging human-to-human transmission.

The H5N1 Influenza Pandemic Threat



Affected Countries with Confirmed H5N1 Human Cases

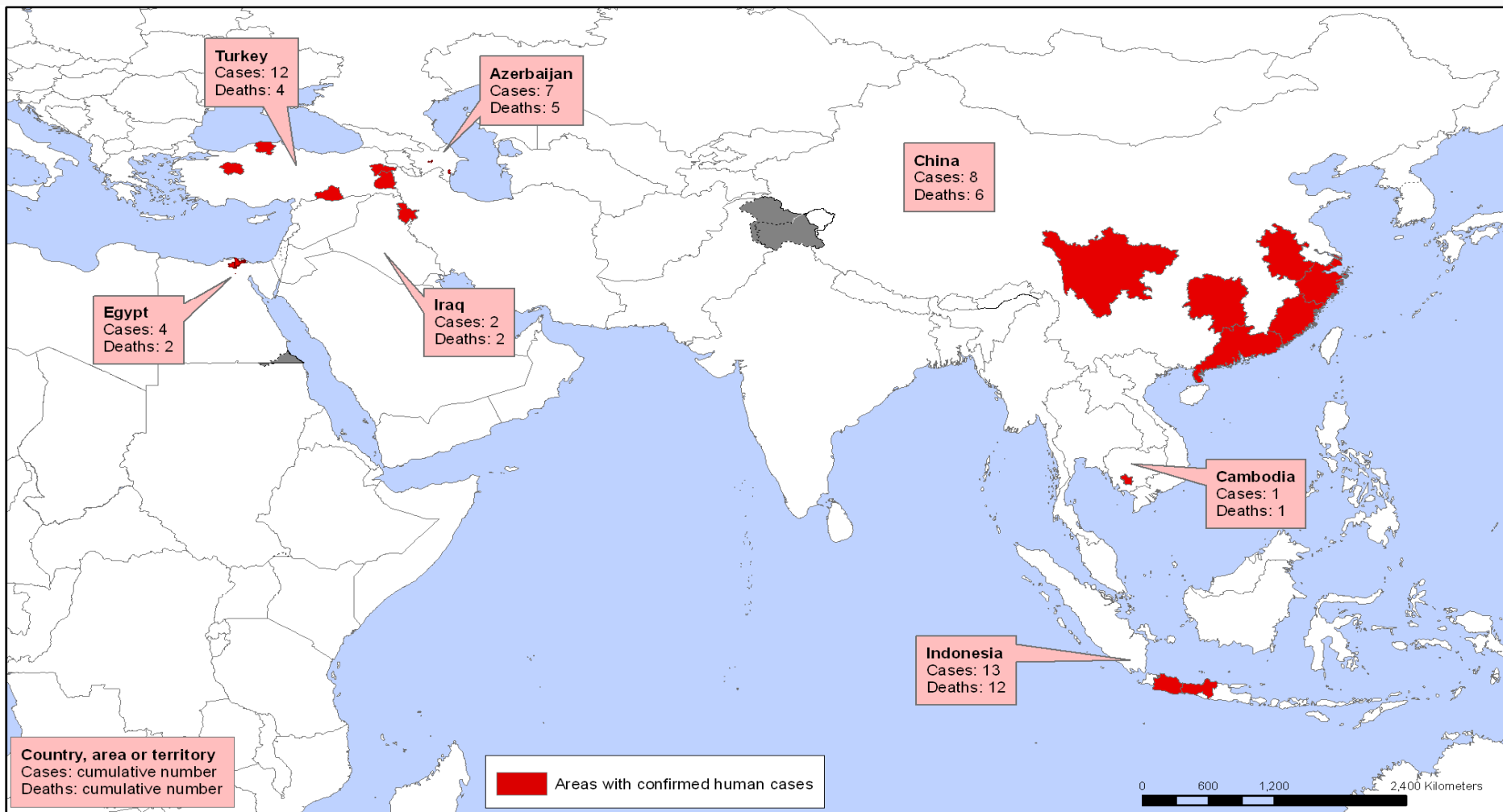


The boundaries and names shown and the designations used on this map do not imply the expression of any opinion whatsoever on the part of the World Health Organization concerning the legal status of any country, territory, city or area or of its authorities, or concerning the delimitation of its frontiers or boundaries. Dotted lines on maps represent approximate border lines for which there may not yet be full agreement.

Data Source: WHO / Map Production: Public Health Mapping and GIS
Communicable Diseases (CDS) World Health Organization

© WHO 2006. All rights reserved

Affected Countries with Confirmed H5N1 Human Cases



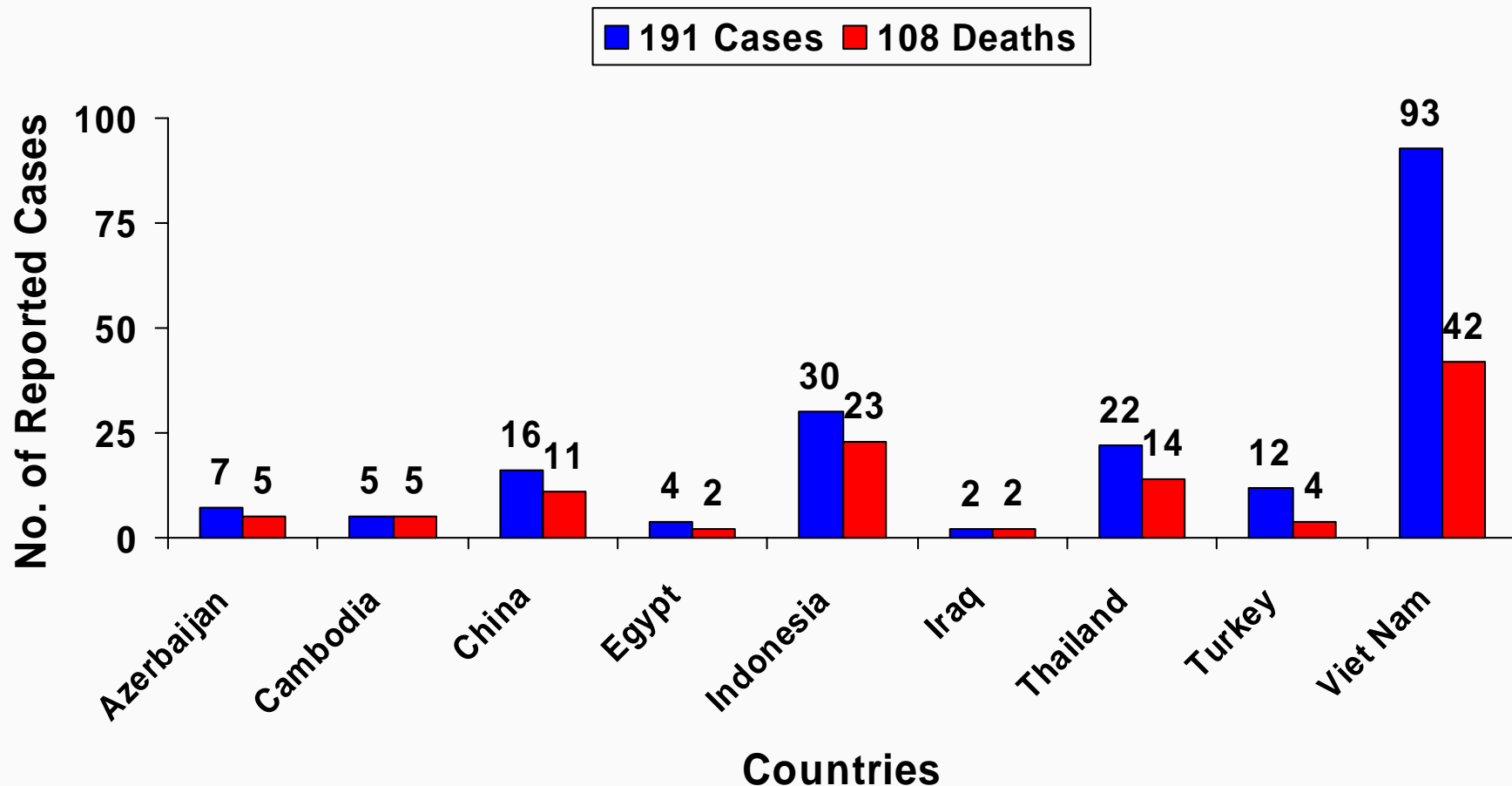
The boundaries and names shown and the designations used on this map do not imply the expression of any opinion whatsoever on the part of the World Health Organization concerning the legal status of any country, territory, city or area or of its authorities, or concerning the delimitation of its frontiers or boundaries. Dotted lines on maps represent approximate border lines for which there may not yet be full agreement.

Data Source: WHO / Map Production: Public Health Mapping and GIS
Communicable Diseases (CDS) World Health Organization

© WHO 2006. All rights reserved

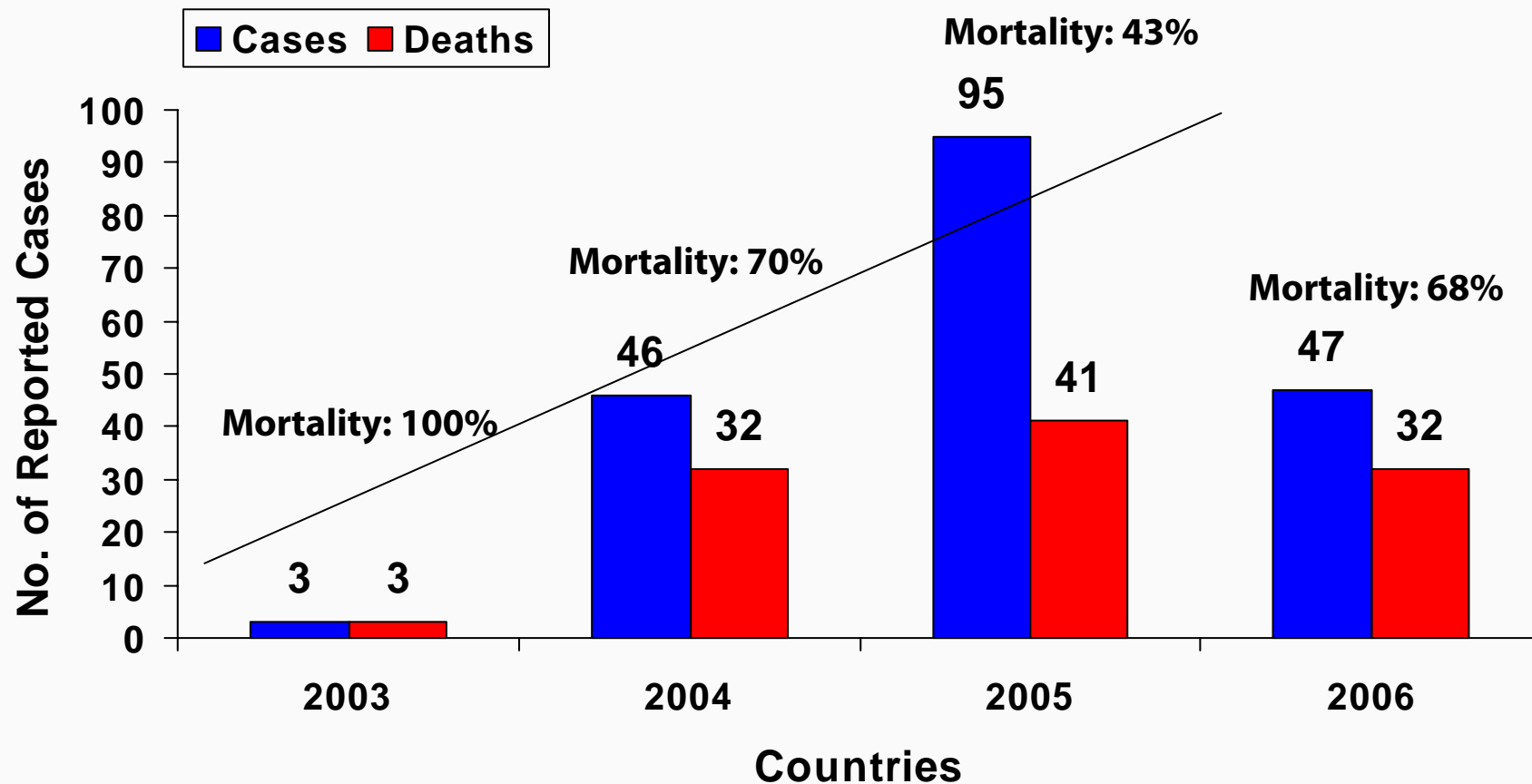
Cumulative Number of Confirmed H5N1 Human Cases

- Data from December 26th, 2003, to April 4th, 2006



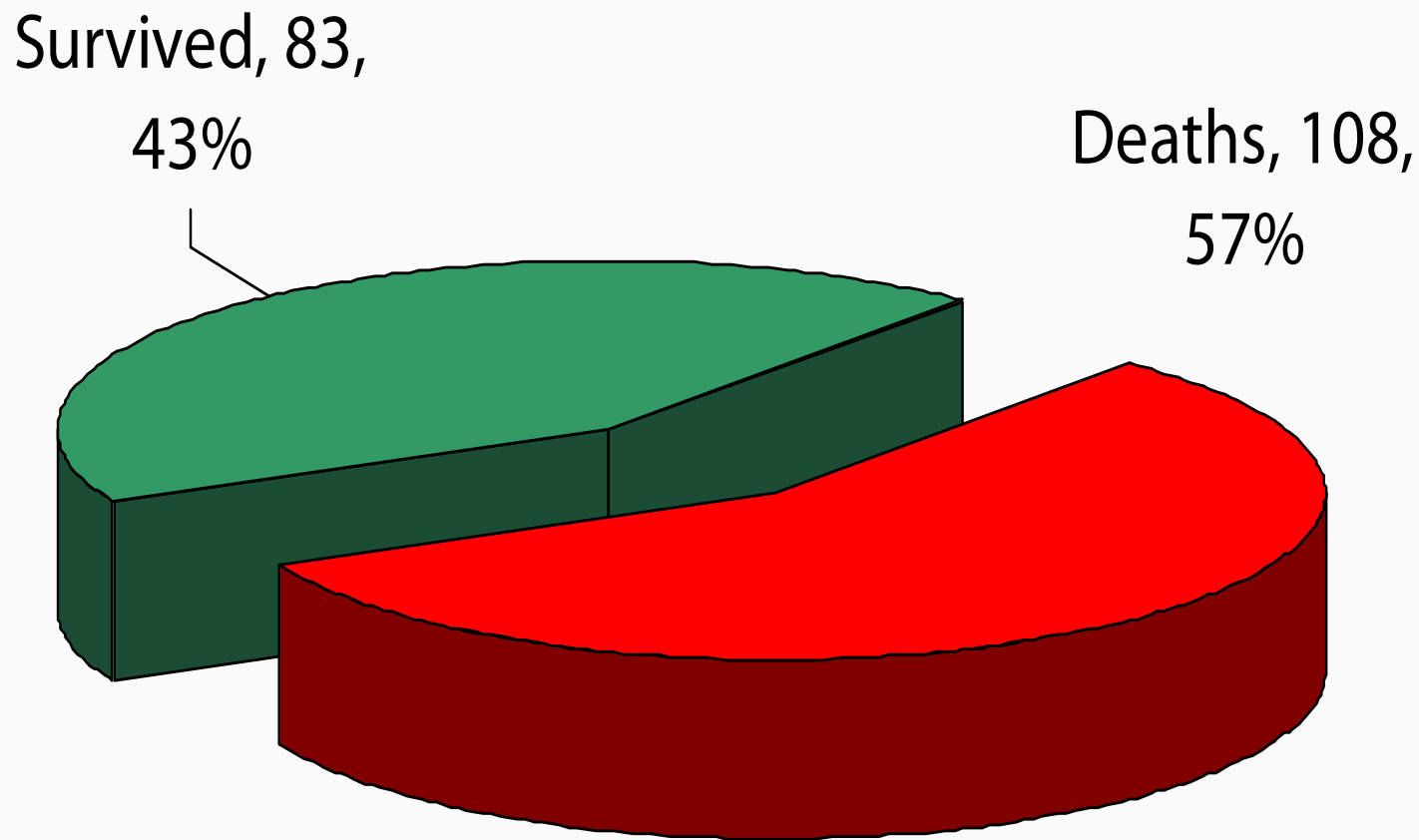
Cumulative Number of Confirmed H5N1 Human Cases

- Data from December 26th, 2003, to April 4th, 2006



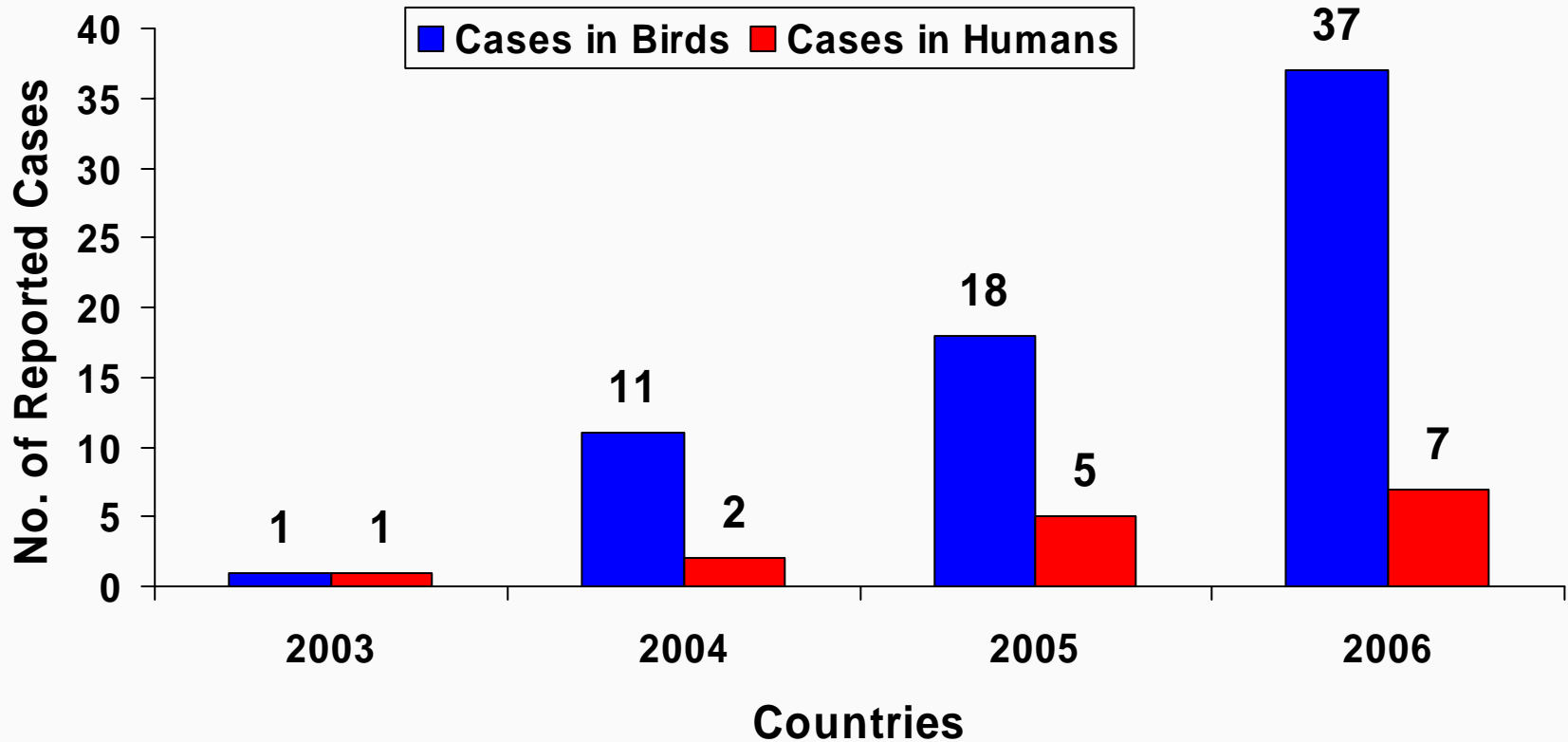
Cumulative Number of Confirmed H5N1 Human Cases

- Data from December 26th, 2003, to April 4th, 2006



Avian and Human H5N1 Identified in No. of Countries

- Data from December 26th, 2003, to April 4th, 2006



Nations with Confirmed H5N1 Avian Influenza (April, 2006)

