

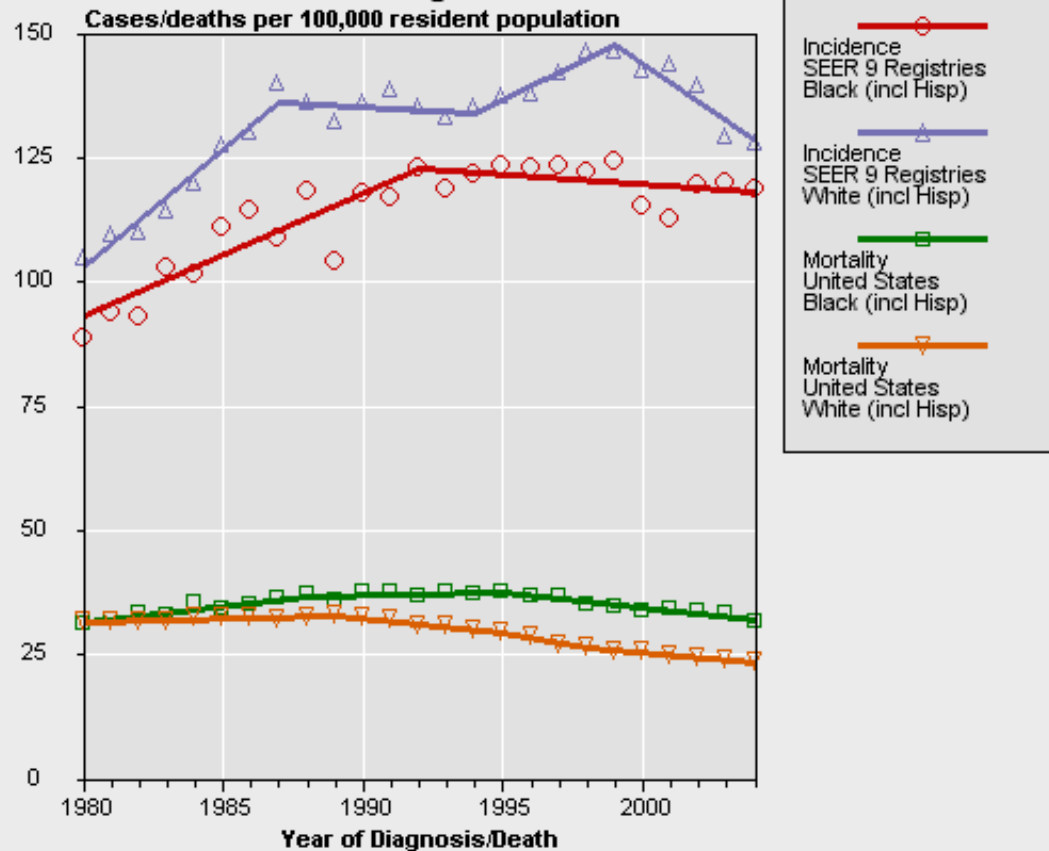
This work is licensed under a [Creative Commons Attribution-NonCommercial-ShareAlike License](https://creativecommons.org/licenses/by-nc-sa/4.0/). Your use of this material constitutes acceptance of that license and the conditions of use of materials on this site.



Copyright 2007, The Johns Hopkins University. All rights reserved. Use of these materials permitted only in accordance with license rights granted. Materials provided "AS IS"; no representations or warranties provided. User assumes all responsibility for use, and all liability related thereto, and must independently review all materials for accuracy and efficacy. May contain materials owned by others. User is responsible for obtaining permissions for use from third parties as needed.

Historical Trends (1980-2004)

Breast, Female All Ages



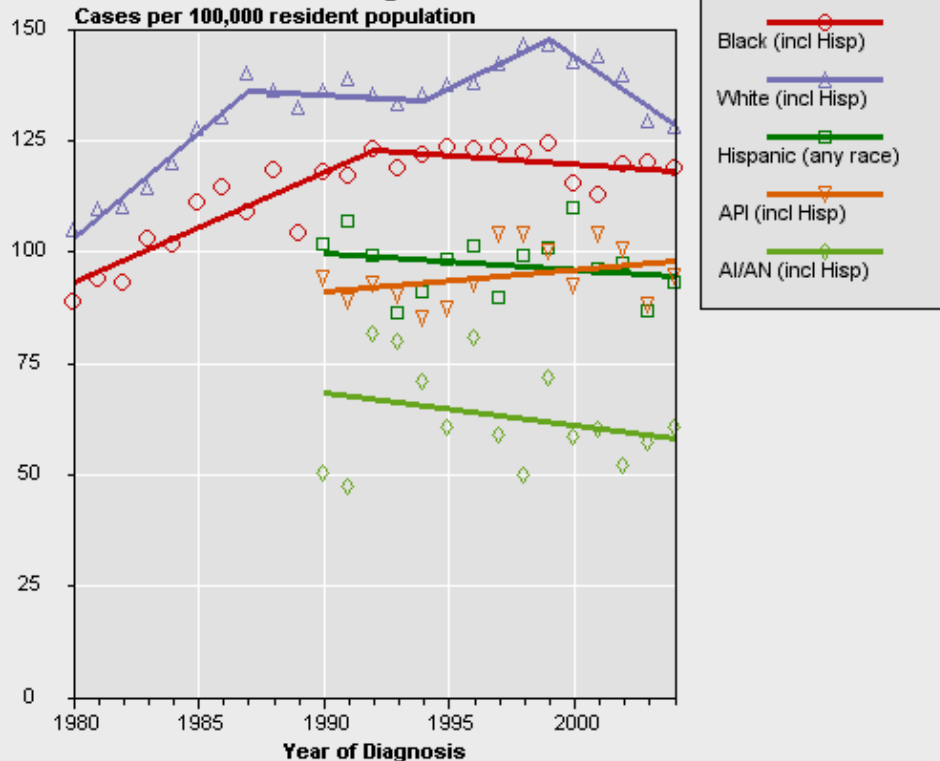
Created by statecancerprofiles.cancer.gov on 08/22/2007 3:41 pm.
Regression lines calculated using the [Joinpoint Regression Program](#).

Source: Incidence data provided by the [SEER Program](#). Rates calculated by the National Cancer Institute using [SEER*Stat](#). Rates are age-adjusted to the [2000 US standard population](#) (19 age groups: <1, 1-4, 5-9, ... , 80-84, 85+). Rates are for invasive cancer only (except for bladder cancer which is invasive and in situ) or unless otherwise specified. Population counts for denominators are based on Census populations as [modified](#) by NCI.

Source: Death data provided by the [National Vital Statistics System](#) public use data file. Death rates calculated by the National Cancer Institute using [SEER*Stat](#). Death rates (deaths per 100,000 population per year) are age-adjusted to the [2000 US standard population](#) (19 age groups: <1, 1-4, 5-9, ... , 80-84, 85+). Population counts for denominators are based on Census populations as [modified](#) by NCI.

Historical Trends (1980-2004)

Incidence, SEER 9 Registries Breast, Female All Ages



Created by statecancerprofiles.cancer.gov on 08/22/2007 4:32 pm.
Regression lines calculated using the [Joinpoint Regression Program](#).

For Hispanic incidence data, NHIA (NAACCR Hispanic Identification Algorithm) was used for Hispanic Ethnicity (see [Technical Notes section of the USCS](#)).

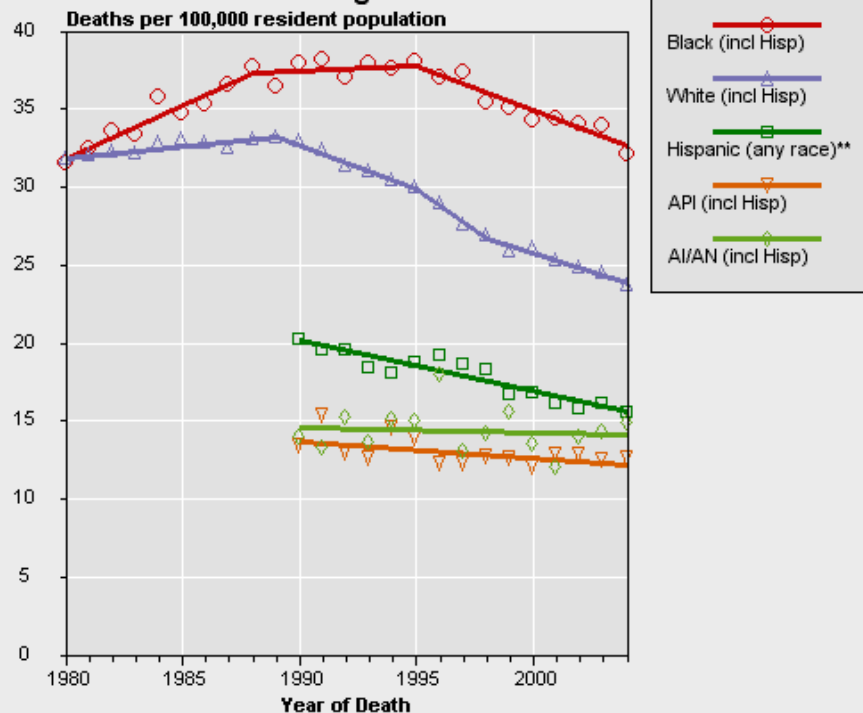
Statistics for minorities may be affected by inconsistent race identification between the cancer case reports (sources for numerator of rate) and data from the Census Bureau (source for denominator of rate); and from undercounts of some population groups in the census.

Source: Incidence data provided by the [SEER Program](#). Rates calculated by the National Cancer Institute using [SEER*Stat](#). Rates are age-adjusted to the [2000 US standard population](#) (19 age groups: <1, 1-4, 5-9, ... , 80-84, 85+). Rates are for invasive cancer only (except for bladder cancer which is invasive and in situ) or unless otherwise specified. Population counts for denominators are based on Census populations as [modified](#) by NCI.

Due to data availability issues, the time period used in the calculation of the joinpoint regression model may [differ](#) for selected racial groups or counties.

Historical Trends (1980-2004)

Mortality, United States Breast, Female All Ages



Created by statecancerprofiles.cancer.gov on 08/22/2007 4:34 pm.
Regression lines calculated using the [Joinpoint Regression Program](#).

Statistics for minorities may be affected by inconsistent race identification between the cancer case reports (sources for numerator of rate) and data from the Census Bureau (source for denominator of rate); and from undercounts of some population groups in the census.

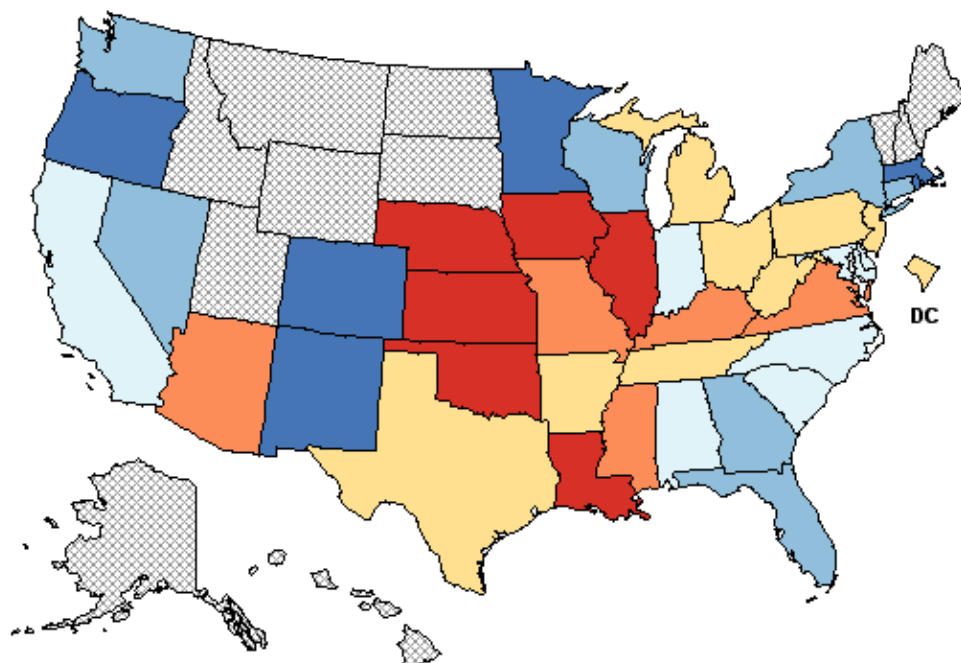
Source: Death data provided by the [National Vital Statistics System](#) public use data file. Death rates calculated by the National Cancer Institute using [SEER*Stat](#). Death rates (deaths per 100,000 population per year) are age-adjusted to the [2000 US standard population](#) (19 age groups: <1, 1-4, 5-9, ..., 80-84, 85+). Population counts for denominators are based on Census populations as [modified](#) by NCI.

** Hispanic mortality data for the United States has been excluded for the following states: Connecticut, Louisiana, Maine, Maryland, Mississippi, New Hampshire, New York, North Dakota, Oklahoma, Vermont, and Virginia. The data on Hispanic and non-Hispanic mortality for these states may be unreliable for the time period used in the generation of the trend (1990-2004) and has been excluded from the calculation of the United States recent trend. This was based on the value of the [Hispanic Index](#).

Public Domain

Due to data availability issues, the time period used in the calculation of the joinpoint regression model may [differ](#) for selected racial groups or counties.

Age-Adjusted Death Rates for United States, 2000 - 2004
Breast
Black (includes Hispanic), Female, All Ages



Age-Adjusted Annual Death Rate (Deaths per 100,000)
Quantile Interval

- 37.2 to 40.3
- 36.3 to 37.1
- 34.3 to 36.2
- 30.9 to 34.2
- 26.8 to 30.8
- 19.6 to 26.7
- Suppressed*

United States Rate (95% C.I.)
 33.8 (33.4 - 34.2)

Healthy People 2010 Goal 03-03
 22.3

Created by statecancerprofiles.cancer.gov on 08/22/2007 3:44 pm.

[State Cancer Registries](#) may provide more current or more local data.

Data presented on the State Cancer Profiles Web Site may differ from statistics reported by the State Cancer Registries ([for more information](#)).

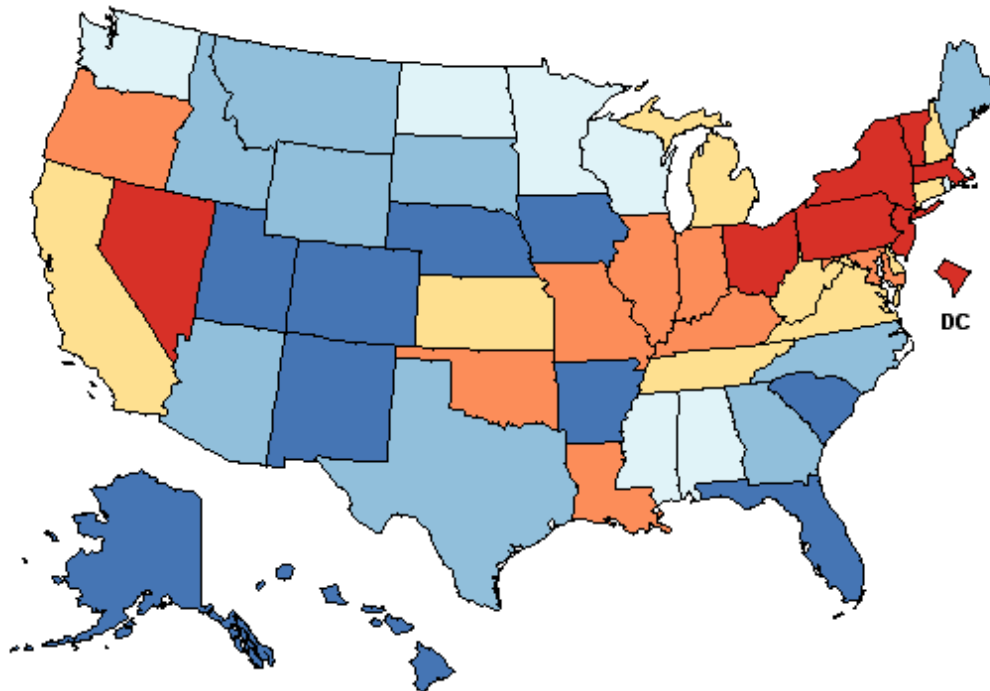
Source: Death data provided by the [National Vital Statistics System](#) public use data file. Death rates calculated by the National Cancer Institute using [SEER*Stat](#). Death rates (deaths per 100,000 population per year) are age-adjusted to the [2000 US standard population](#) (19 age groups: <1, 1-4, 5-9, ... , 80-84, 85+). The Healthy People 2010 goals are based on rates adjusted using different methods but the differences should be minimal. Population counts for denominators are based on Census populations as [modified](#) by NCI.

* Data have been [suppressed](#) to ensure confidentiality and stability of rate estimates. Counts are suppressed if fewer than 16 cases were reported in a specific area-sex-race category.

Healthy People 2010 Goal 03-03 : Reduce the breast cancer death rate to 22.3.

[Healthy People 2010](#) Objectives provided by the [Centers for Disease Control and Prevention](#).

Age-Adjusted Death Rates for United States, 2000 - 2004
Breast
White (includes Hispanic), Female, All Ages



Age-Adjusted
 Annual Death Rate
 (Deaths per 100,000)

Quantile Interval

- 26.0 to 28.3
- 25.5 to 25.9
- 24.6 to 25.4
- 24.1 to 24.5
- 23.5 to 24.0
- 22.3 to 23.4

United States
 Rate (95% C.I.)
 25.0 (24.8 - 25.1)

Healthy People 2010
 Goal 03-03
 22.3

Created by statecancerprofiles.cancer.gov on 08/22/2007 3:49 pm.

[State Cancer Registries](#) may provide more current or more local data.

Data presented on the State Cancer Profiles Web Site may differ from statistics reported by the State Cancer Registries ([for more information](#)).

Source: Death data provided by the [National Vital Statistics System](#) public use data file. Death rates calculated by the National Cancer Institute using [SEER*Stat](#). Death rates (deaths per 100,000 population per year) are age-adjusted to the [2000 US standard population](#) (19 age groups: <1, 1-4, 5-9, ... , 80-84, 85+). The Healthy People 2010 goals are based on rates adjusted using different methods but the differences should be minimal.

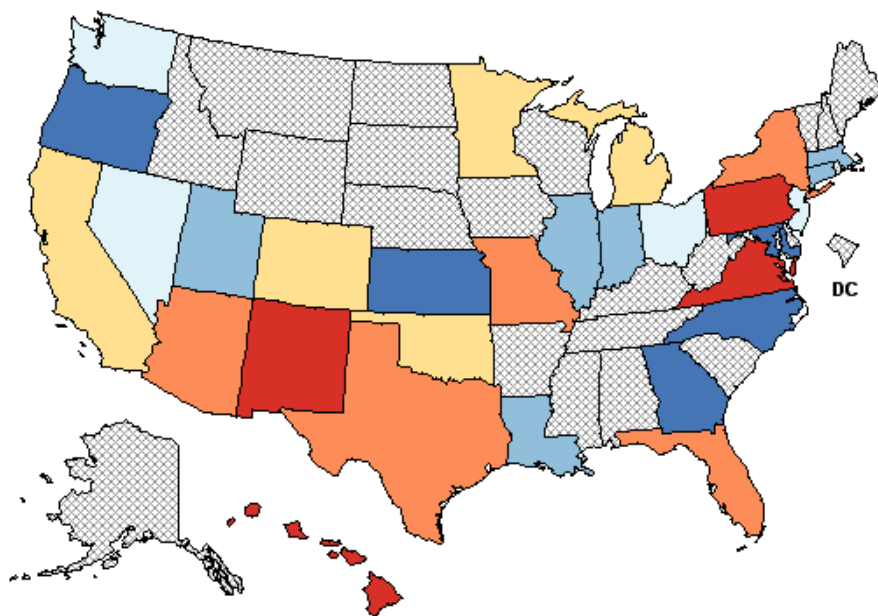
Population counts for denominators are based on Census populations as [modified](#) by NCI.

Healthy People 2010 Goal 03-03 : Reduce the breast cancer death rate to 22.3.

[Healthy People 2010](#) Objectives provided by the [Centers for Disease Control and Prevention](#).

Age-Adjusted Death Rates for United States, 2000 - 2004

Breast Hispanic (any race), Female, All Ages



Age-Adjusted
Annual Death Rate
(Deaths per 100,000)

Quantile Interval

- 18.1 to 29.4
- 16.0 to 18.0
- 14.7 to 15.9
- 13.9 to 14.6
- 10.6 to 13.8
- 4.7 to 10.5

Suppressed*

United States ▼
Rate (95% C.I.)
16.1 (15.8 - 16.5)

Healthy People 2010
Goal 03-03
22.3

Created by statecancerprofiles.cancer.gov on 08/22/2007 4:41 pm.

[State Cancer Registries](#) may provide more current or more local data.

Data presented on the State Cancer Profiles Web Site may differ from statistics reported by the

State Cancer Registries ([for more information](#)).

Source: Death data provided by the [National Vital Statistics System](#) public use data file. Death rates calculated by the National Cancer Institute using [SEER*Stat](#). Death rates (deaths per 100,000 population per year) are age-adjusted to the [2000 US standard population](#) (19 age groups: <1, 1-4, 5-9, ... , 80-84, 85+). The Healthy People 2010 goals are based on rates adjusted using different methods but the differences should be minimal. Population counts for denominators are based on Census populations as [modified](#) by NCI.

* Data have been [suppressed](#) to ensure confidentiality and stability of rate estimates. Counts are suppressed if fewer than 16 cases were reported in a specific area-sex-race category.

▼ Hispanic mortality rates for the United States has been excluded for the following states: Minnesota, New Hampshire, and North Dakota. The data on Hispanic and non-Hispanic mortality for these states may be unreliable for this time period and has been excluded from the calculation of the United States rate.

This was based on the value of the [Hispanic Index](#).

Statistics for minorities may be affected by inconsistent race identification between the death certificates (sources for numerator of rate) and data from the Census Bureau (source for denominator of rate); and from undercounts of some population groups in the census.

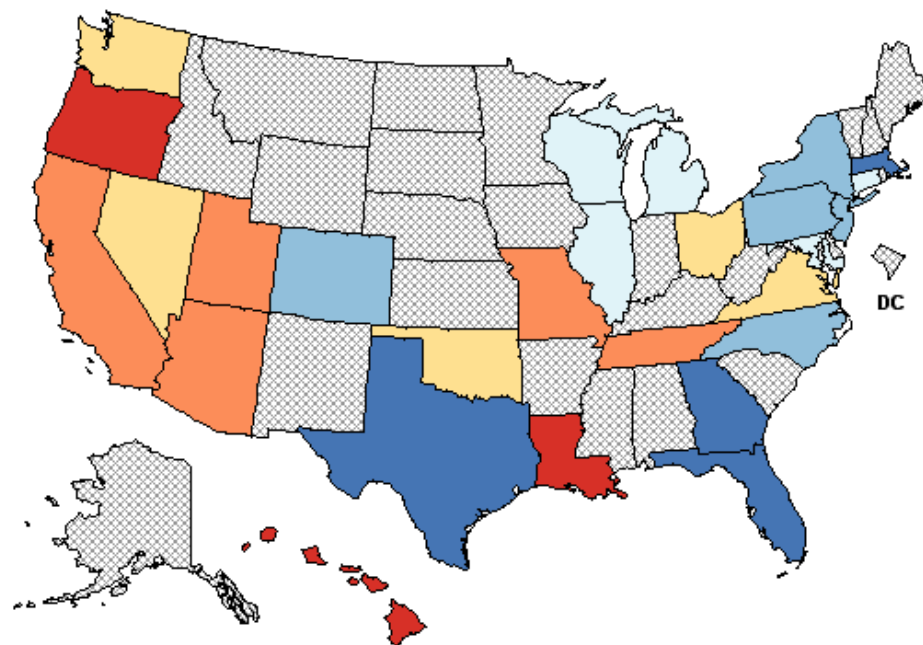
Based on the value of the [Hispanic Index](#), data on Hispanic and non-Hispanic mortality rates may be unreliable for this time period in the following states: Minnesota, New Hampshire, and North Dakota.

The user is cautioned against drawing conclusions from such data.

Healthy People 2010 Goal 03-03 : Reduce the breast cancer death rate to 22.3.

[Healthy People 2010](#) Objectives provided by the [Centers for Disease Control and Prevention](#).

Age-Adjusted Death Rates for United States, 2000 - 2004
Breast
Asian or Pacific Islander (includes Hispanic), Female, All Ages



**Age-Adjusted
Annual Death Rate
(Deaths per 100,000)**

[Quantile Interval](#)

- 15.3 to 19.9
- 13.9 to 15.2
- 12.6 to 13.8
- 11.6 to 12.5
- 8.9 to 11.5
- 6.8 to 8.8
- Suppressed*

**United States
Rate (95% C.I.)
12.6 (12.2 - 13.1)**

**Healthy People 2010
Goal 03-03
22.3**

Created by statecancerprofiles.cancer.gov on 08/22/2007 4:46 pm.

[State Cancer Registries](#) may provide more current or more local data.

Data presented on the State Cancer Profiles Web Site may differ from statistics reported by the State Cancer Registries ([for more information](#)).

Source: Death data provided by the [National Vital Statistics System](#) public use data file. Death rates calculated by the National Cancer Institute using [SEER*Stat](#). Death rates (deaths per 100,000 population per year) are age-adjusted to the [2000 US standard population](#) (19 age groups: <1, 1-4, 5-9, ... , 80-84, 85+). The Healthy People 2010 goals are based on rates adjusted using different methods but the differences should be minimal. Population counts for denominators are based on Census populations as [modified](#) by NCI.

* Data have been [suppressed](#) to ensure confidentiality and stability of rate estimates. Counts are suppressed if fewer than 16 cases were reported in a specific area-sex-race category.

Statistics for minorities may be affected by inconsistent race identification between the death certificates (sources for numerator of rate) and data from the Census Bureau (source for denominator of rate); and from undercounts of some population groups in the census.

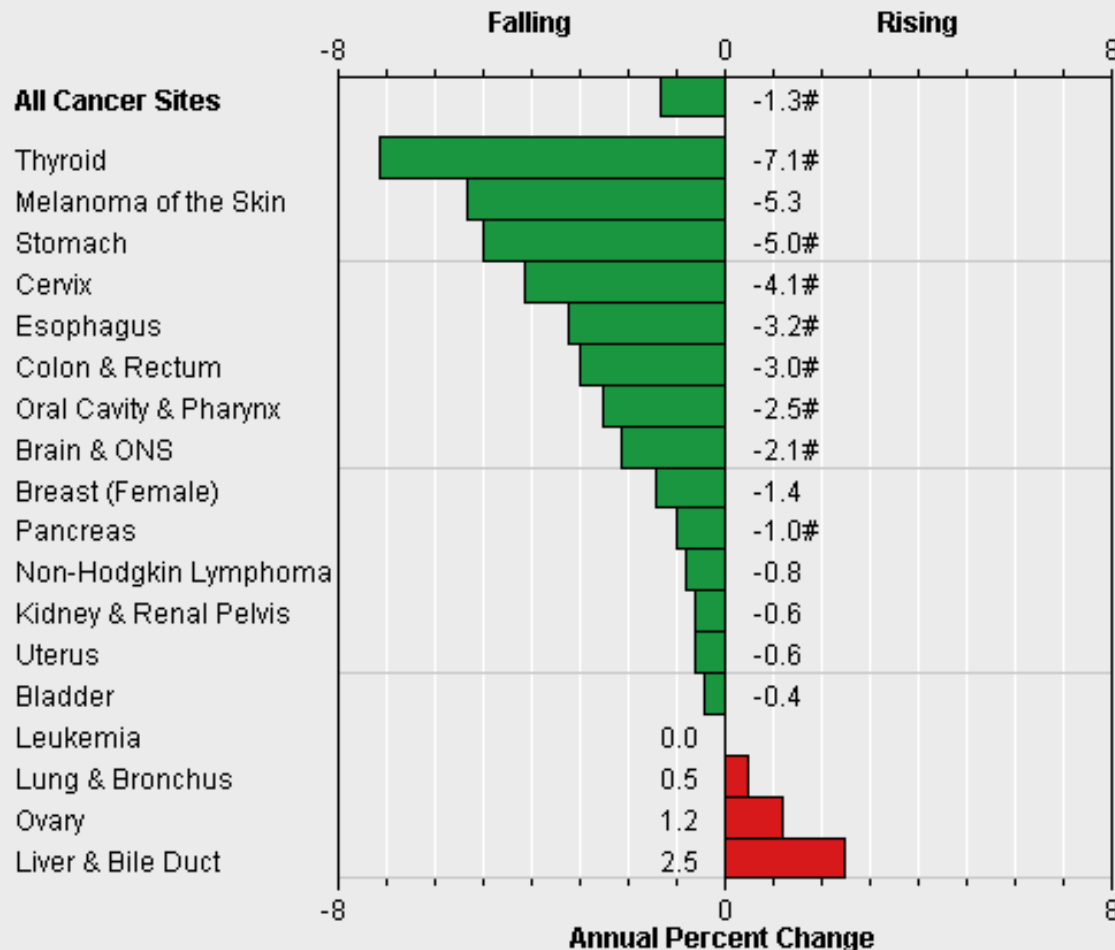
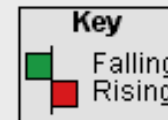
Healthy People 2010 Goal 03-03 : Reduce the breast cancer death rate to 22.3.

[Healthy People 2010](#) Objectives provided by the [Centers for Disease Control and Prevention](#).

5-Year Rate Changes - Mortality

United States, 2000-2004

All Ages, Females, Black (incl Hisp)



Created by statecancerprofiles.cancer.gov on 08/22/2007 3:51 pm.

Annual Percent Change (APC) over the 5-year period calculated by [SEER*Stat](#).

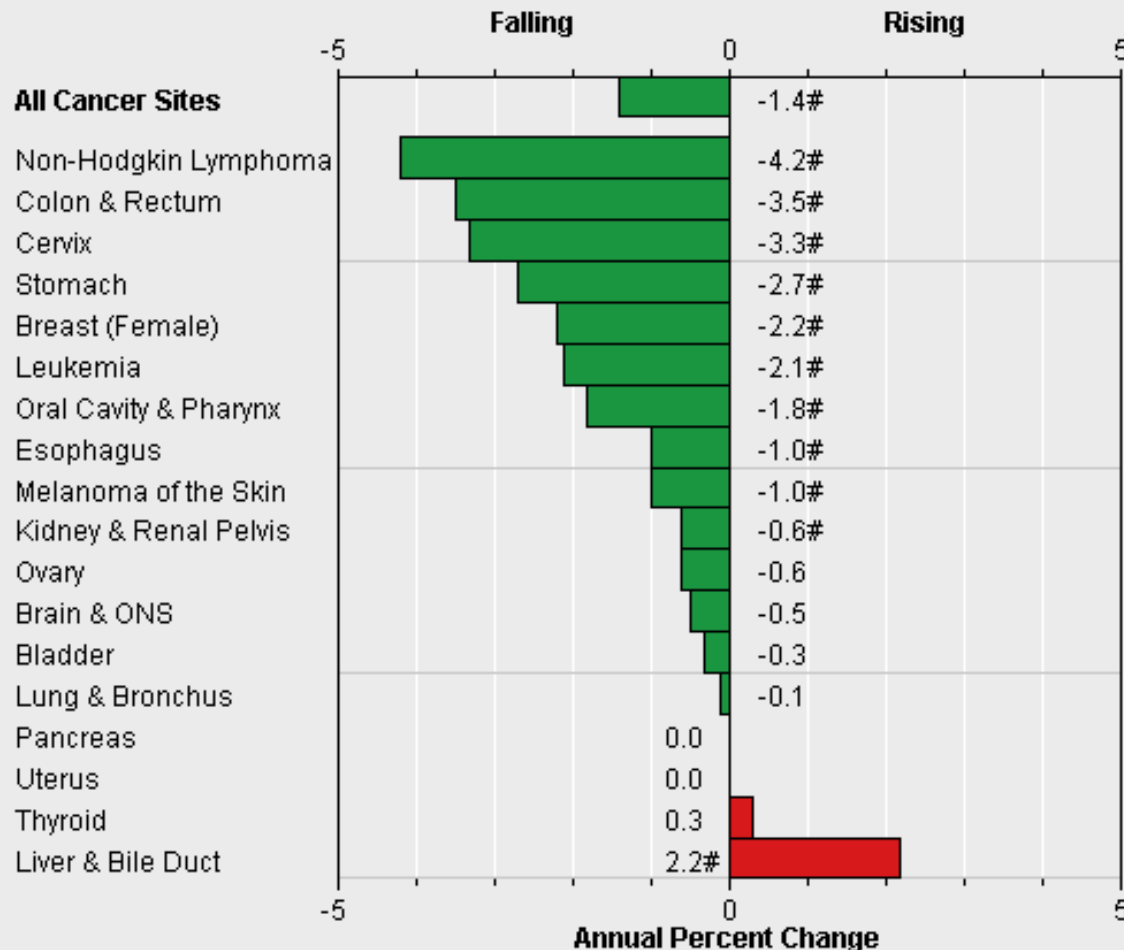
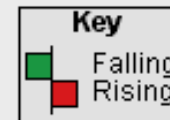
Source: Death data provided by the [National Vital Statistics System](#) public use data file. Death rates calculated by the National Cancer Institute using [SEER*Stat](#). Death rates (deaths per 100,000 population per year) are age-adjusted to the [2000 US standard population](#) (19 age groups: <1, 1-4, 5-9, ..., 80-84, 85+). Population counts for denominators are based on Census populations as [modified](#) by NCI.

- The annual percent change is significantly different from zero ($p < 0.05$).

5-Year Rate Changes - Mortality

United States, 2000-2004

All Ages, Females, White (incl Hisp)



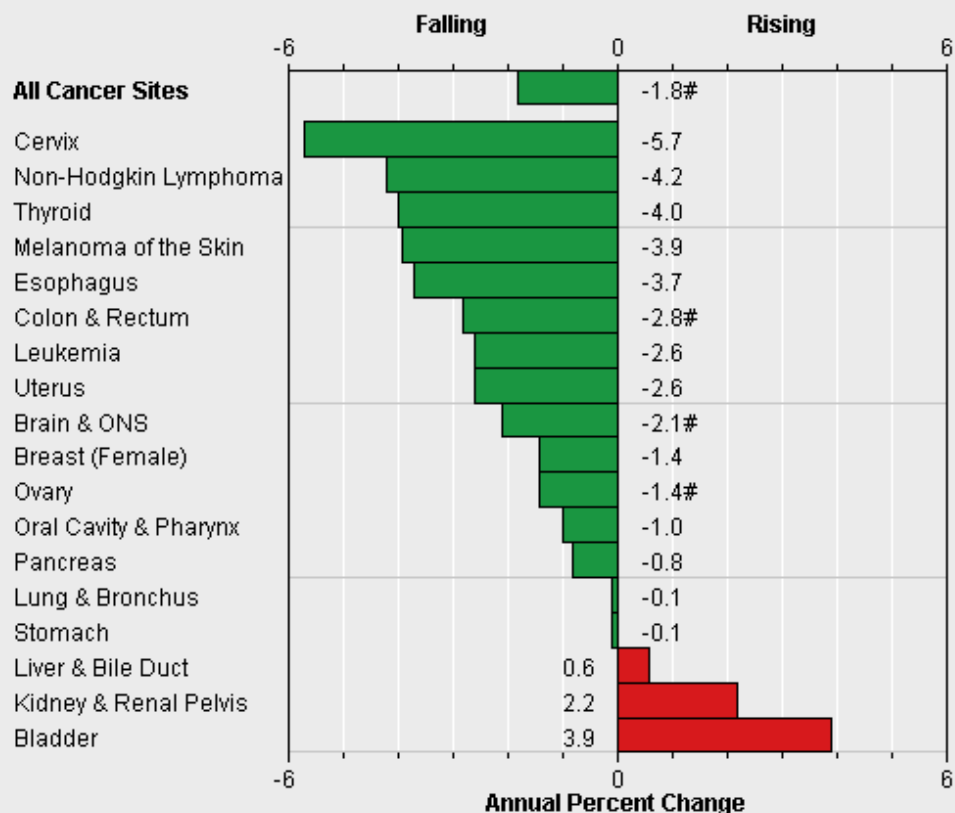
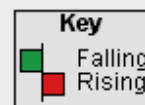
Created by statecancerprofiles.cancer.gov on 08/22/2007 3:52 pm.

Annual Percent Change (APC) over the 5-year period calculated by [SEER*Stat](#).

Source: Death data provided by the [National Vital Statistics System](#) public use data file. Death rates calculated by the National Cancer Institute using [SEER*Stat](#). Death rates (deaths per 100,000 population per year) are age-adjusted to the [2000 US standard population](#) (19 age groups: <1, 1-4, 5-9, ..., 80-84, 85+). Population counts for denominators are based on Census populations as [modified](#) by NCI.

- The annual percent change is significantly different from zero ($p < 0.05$).

5-Year Rate Changes - Mortality
United States, 2000-2004
All Ages, Females, Hispanic (any race)



Created by statecancerprofiles.cancer.gov on 08/22/2007 4:50 pm.

Annual Percent Change (APC) over the 5-year period calculated by [SEER*Stat](http://seer.cancer.gov).

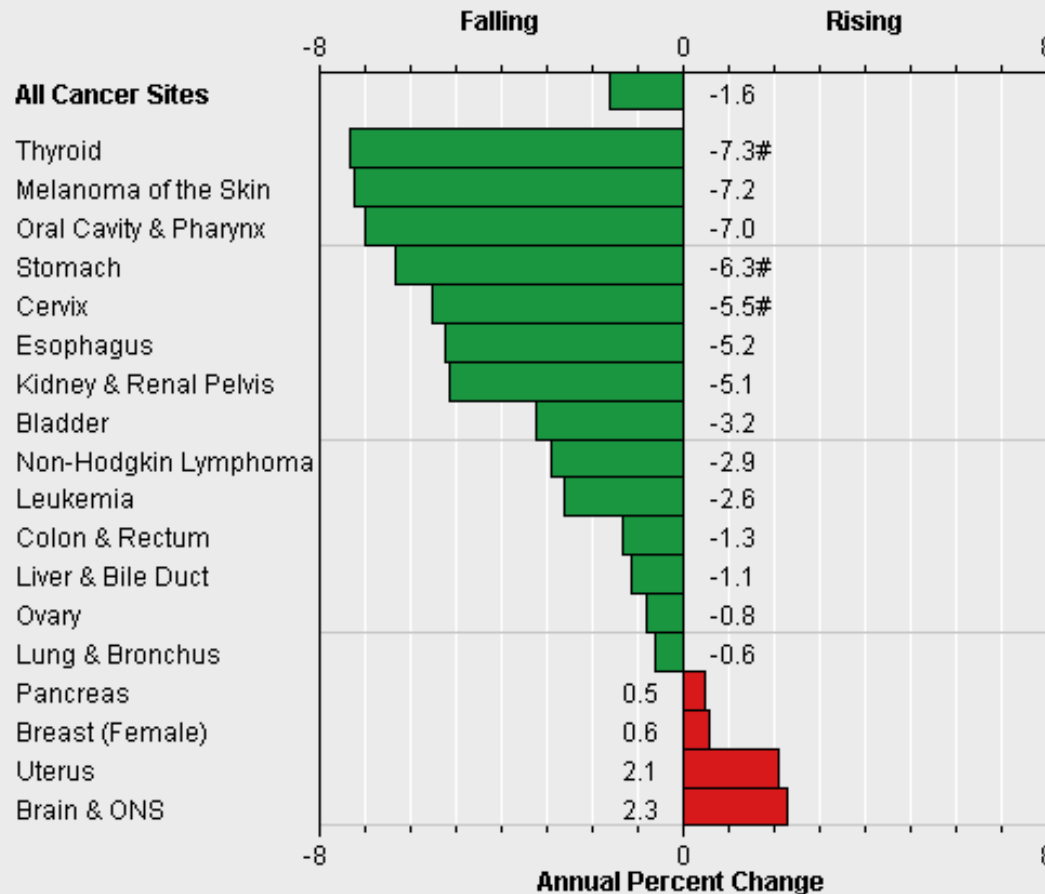
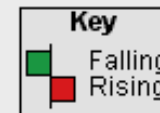
Statistics for minorities may be affected by inconsistent race identification between the cancer case reports (sources for numerator of rate) and data from the Census Bureau (source for denominator rate); and from undercounts of some population groups in the census.

Source: Death data provided by the [National Vital Statistics System](http://www.cdc.gov/nchs/nvss) public use data file. Death rates calculated by the National Cancer Institute using [SEER*Stat](http://seer.cancer.gov). Death rates (deaths per 100,000 population per year) are age-adjusted to the [2000 US standard population](http://www.cdc.gov/nchs/nvss) (19 age groups: <1, 1-4, 5-9, ..., 80-84, 85+). Population counts for denominators are based on Census populations as [modified](http://www.cdc.gov/nchs/nvss) by NCI.

Hispanic mortality data for the United States have been excluded for the following states: Minnesota, New Hampshire, and North Dakota. The data on Hispanic and non-Hispanic mortality for these states may be unreliable for the time period used in the generation of the trend (2000-2004) and have been excluded from the calculation of the United States recent trend. This was based on the value of the [Hispanic Index](http://www.cdc.gov/nchs/nvss).

- The annual percent change is significantly different from zero ($p < 0.05$).

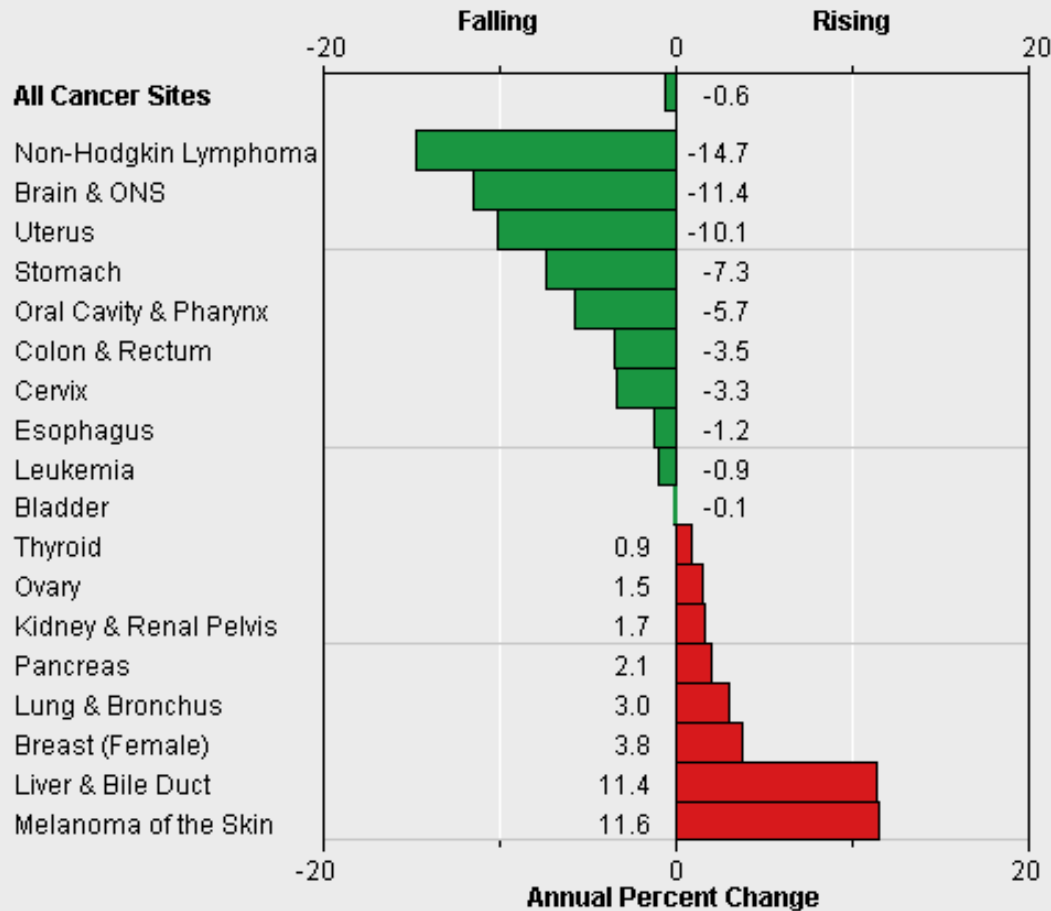
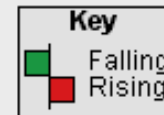
5-Year Rate Changes - Mortality
United States, 2000-2004
All Ages, Females, API (incl Hisp)



Created by statecancerprofiles.cancer.gov on 08/22/2007 4:50 pm.
 Annual Percent Change (APC) over the 5-year period calculated by [SEER*Stat](http://seer.cancer.gov).
 Statistics for minorities may be affected by inconsistent race identification between the cancer case reports (sources for numerator of rate) and data from the Census Bureau (source for denominator rate); and from undercounts of some population groups in the census.
 Source: Death data provided by the [National Vital Statistics System](http://nvl.nchs.gov) public use data file. Death rates calculated by the National Cancer Institute using [SEER*Stat](http://seer.cancer.gov). Death rates (deaths per 100,000 population per year) are age-adjusted to the [2000 US standard population](http://www.cdc.gov) (19 age groups: <1, 1-4, 5-9, ... , 80-84, 85+). Population counts for denominators are based on Census populations as [modified](http://www.cdc.gov) by NCI.

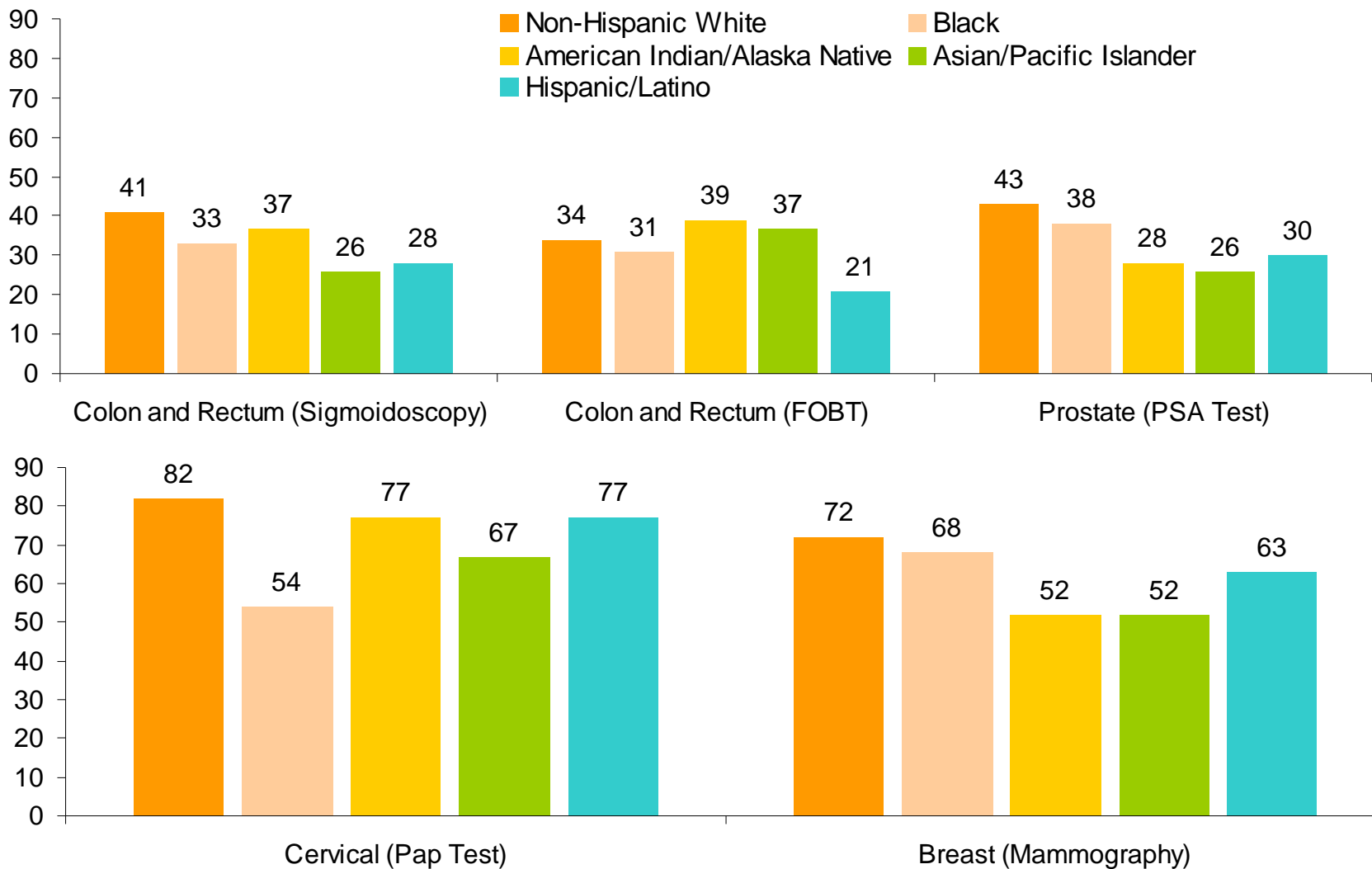
- The annual percent change is significantly different from zero (p<0.05).

5-Year Rate Changes - Mortality
United States, 2000-2004
All Ages, Females, All/AN (incl Hisp)



Created by statecancerprofiles.cancer.gov on 08/22/2007 4:51 pm.
 Annual Percent Change (APC) over the 5-year period calculated by [SEER*Stat](http://seer.cancer.gov).
 Statistics for minorities may be affected by inconsistent race identification between the cancer case reports (sources for numerator of rate) and data from the Census Bureau (source for denominator rate); and from undercounts of some population groups in the census.
 Source: Death data provided by the [National Vital Statistics System](http://www.cdc.gov/nchs) public use data file. Death rates calculated by the National Cancer Institute using [SEER*Stat](http://seer.cancer.gov). Death rates (deaths per 100,000 population per year) are age-adjusted to the [2000 US standard population](http://www.cdc.gov/nchs) (19 age groups: <1, 1-4, 5-9, ... , 80-84, 85+). Population counts for denominators are based on Census populations as [modified](http://www.cdc.gov/nchs) by NCI.

Cancer Screening by Race/Ethnicity, 2000



Adapted by CTLT from Phillips JM. Cancer prevention among racial ethnic minorities. *Semin Oncol Nurs* 2005;21:278-285. Data based on results of the National Health Interview Survey 2000, National Center for Health Statistics, Centers for Disease Control and Prevention.

Figure 4. Rates of lymph node-positive tumors per 1000 mammograms by racial and ethnic group and mammography screening interval group, adjusted by the age and registry distribution of the mammography registry cohort. From [Smith-Bindman R. Does utilization of screening mammography explain racial and ethnic differences in breast cancer? *Ann Intern Med* 2006;144:541-553.](#)

This image has been deleted because JHSPH OpenCourseWare was unable to secure permission for its use. The image may be viewed for free by following the link provided above.

Figure 5. Rates of high-grade tumors per 1000 mammograms by racial and ethnic group and mammography screening interval group, adjusted to the age and registry distribution of the mammography registry cohort. From [Smith-Bindman R. Does utilization of screening mammography explain racial and ethnic differences in breast cancer? *Ann Intern Med* 2006;144:541-553.](#)

This image has been deleted because JHSPH OpenCourseWare was unable to secure permission for its use. The image may be viewed for free by following the link provided above.